

Early Literacy & Literacy Launch Update

September 24, 2024

Erin Hashimoto-Martell, Associate Commissioner, Instructional Support

Katherine Tarca, Director, Literacy & Humanities



Agenda

- Increasing impact through the Mass Literacy initiative
- Overview of Literacy Launch and acceleration efforts
- Partnership for Reading Success – Massachusetts (PRISM) grant
- Discussion

Mass Literacy Initiative: Increasing Impact

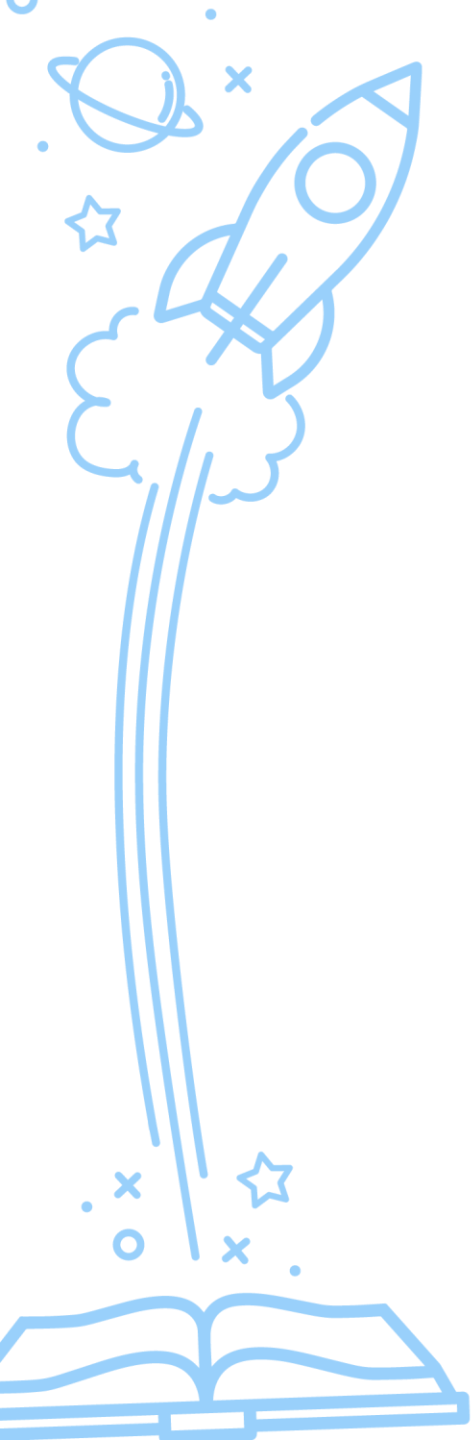
DESE will refine and extend access to early literacy support programs and resources for educators:

- Tiered Literacy Academy
- CURATE reports
- Literacy Leaders Network
- Massachusetts Dyslexia Institute
- GLEAM grant
- Support for early literacy screening



LITERACY





Increase the number of public schools and licensed early education and care providers in the commonwealth providing evidence-based literacy instruction to students in prekindergarten through grade 3.

Students reading and writing on grade level by grade 3

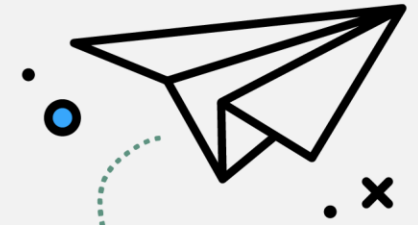
Equity in early literacy

dese

LITERACY



Anticipated Literacy Launch Programs



Statewide Opportunities

- Literacy Launch Professional Learning
- High-quality Instructional Materials (HQIM) Communities of Practice
- Accelerated review of educator preparation programs
- Support for educator preparation programs

Targeted Opportunities

- Partnership for Reading Success – Massachusetts (PRISM) grants

PRISM I Grant

- Intensive support for up to 5 years
- Up to 20 districts and/or charter schools, depending on size
- Conditions for Success
 - Using high-quality instructional materials for literacy in grades K-3
 - Recent emphasis on early literacy
 - Commitment to early literacy improvement from key constituencies including school committee, principals, and teachers
 - Steps to address early literacy achievement disparities



dese

LITERACY



PRISM I Competitive Priorities

- Below-average overall proportion of students meeting expectations on 2024 grade 3 ELA/Literacy MCAS
- Recent substantial increase in newcomer enrollment
- Fewer than 1,000 students enrolled in grades K-3
- A dual-language program or school
- Chronically underperforming designation

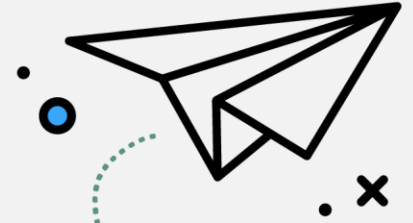


dese

LITERACY



PRISM I Metrics of Success

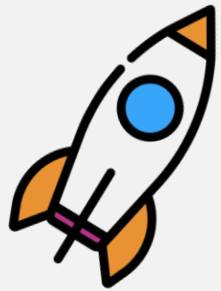


Metrics of success on early literacy screening assessments

- 80% of students in the PRISM I cohort meet reading benchmarks by the end of each grade K-3 by June 2029
- Reduce disparities in the percentage of students in the PRISM I cohort meeting reading benchmarks annually

Metrics of success on Grade 3 ELA MCAS

- 33% increase in the percentage of students meeting or exceeding expectations in the PRISM I cohort by June 2029
- Reduce disparities in the percentage of students in the PRISM I cohort meeting or exceeding expectations annually



Early Literacy & Literacy Launch Update

September 24, 2024

Erin Hashimoto-Martell, Associate Commissioner, Instructional Support

Katherine Tarca, Director, Literacy & Humanities

